

TEN QUESTIONS WITH

Beth Levine of Beth Levine Architect, Inc

compiled by KIMBERLY NICOLETTI

SINCE 1997, BETH LEVINE Architect, Inc has been serving the Vail Valley and beyond, from custom residential homes to high-end restaurant interiors. Levine has earned a reputation both for her creative vision and her technical abilities, with studies in environmental design, mechanical engineering and architecture.

VAIL VALLEY HOME: *What motivated you to become an architect, and what do you still love about it?*

BETH LEVINE: I loved both art and math from a young age.

VVH: *How do you work with clients to attain their vision?*

BL: I am designing my client's product, not mine, so I listen very closely. I also draw as we are speaking, so I'm putting their ideas to paper as they talk.

VVH: *What's an example of a recent challenge and how did you overcome it?*

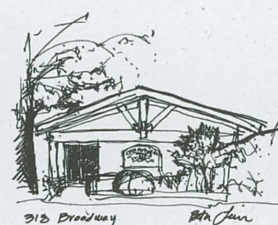
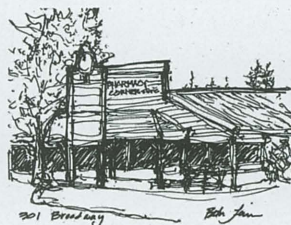
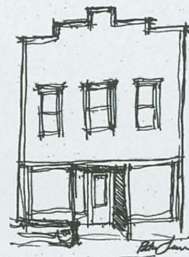
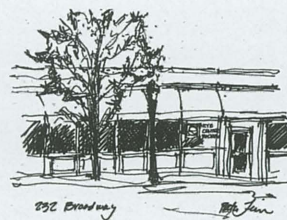
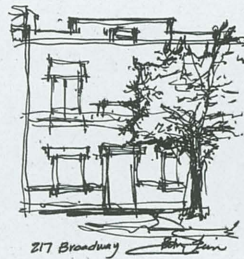
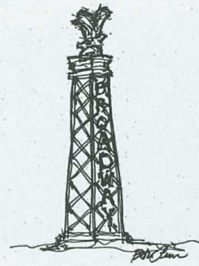
BL: I always work as a team to get the best design and execution. I am working on a remodel in a commercial building, and we are required to upgrade the fire sprinkler system. I had worked with the jurisdiction a number of times and was able to direct the solution efficiently.

VVH: *How does knowing the ins and outs of building codes help clients?*

BL: I sketch "with" the code from the schematic design. Thus, we don't have code surprises at the end.



“ I ALSO DRAW AS WE ARE SPEAKING, SO I’M PUTTING THEIR IDEAS TO PAPER AS THEY TALK. ”



“ I ACTIVELY SKETCH IDEAS FOR MY CLIENTS, CREATING A UNIQUE PORTFOLIO OF DRAWINGS TO COMMEMORATE THE EVOLUTION OF THEIR PROJECT.”

BROADWAY STREET - EAGLE - COLORADO
ART WALK 2019 - BETH LEVINE - VAIL VALLEY ART GUILD

VVH: What is your favorite architectural style?

BL: Mountain contemporary! I love our current style of contemporary mountain design. I feel it relates to nature both aesthetically and technically through materials and proportions.

VVH: Tell us a bit about your team.

BL: It's myself, the founder, project manager and lead designer; Mert Isler, architect and creator of the 3-D imaging that communicates the project; and Jamie Friese, business and marketing coordinator.

VVH: What makes your firm stand out?

BL: My unique blend of art and technology; with that, I'm able to sketch both the overall image and the details.

VVH: Tell us about your artistic skills and how they come into play when working with clients.

BL: I actively sketch ideas for my clients, creating a unique portfolio of drawings to commemorate the evolution of their project.

VVH: What do you like to do in your free time?

BL: I swim, hike, camp and draw.

VVH: Anything else you'd like to add?

BL: I am a member of the Vail Valley Art Guild and sell my artwork through their organization. I have published two town posters: Eagle's Broadway Street and the Central Historic Minturn. **VVH**



YOUR SPACE, YOUR STYLE...OUR PASSION
 ME-DESIGN-STUDIO.COM
 970 331 3464